

ESDEC

INNOVATIVE MOUNTING SYSTEMS

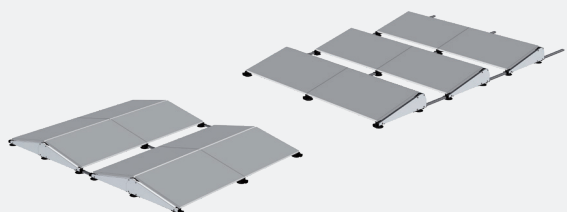
THE INNOVATIVE AND SUPER-FAST SYSTEM FOR FLAT ROOFS

FLATFIX

FUSION

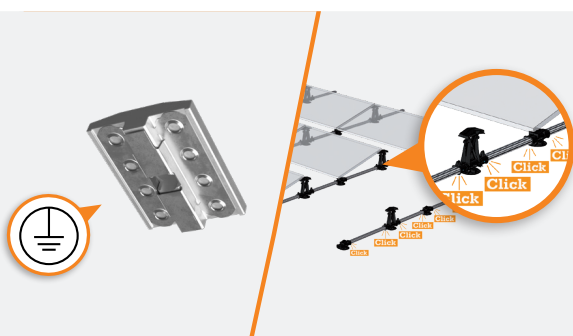
www.esdec.com

THE STRONG POINTS OF FLATFIX FUSION



SINGLE OR DUAL SETUP

- South
- East-West
- North-South

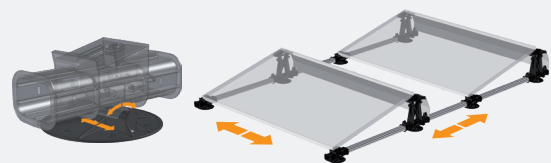


MOUNTING TIME

- Modular construction with minimal number of components
- One-tool approach
- Fixed dimensions
- Integrated synchronization of panels

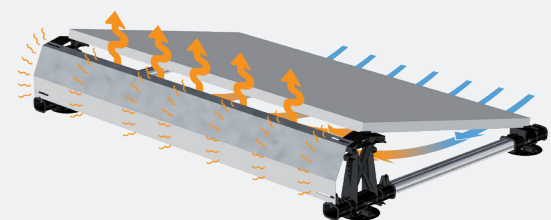
TRANSPORT AND HANDLING

- Minimal number of components
- Lightweight materials
- Connectable short profiles for easy transport
- Fixed dimensions



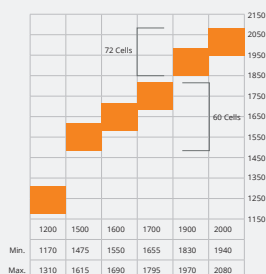
THERMAL DECOUPLING SYSTEM

- Lightweight, optimal ballast
- Different types of ballast possible
- Self-leveling base plates
- Extra base plates to be added flexibly
- Low point load
- Applicable to any type of roofing material



AERODYNAMIC CLOSED SYSTEM

- Storm-proof
- Minimal forces on the solar panel: longer lifespan
- Passively cooled, resulting in high yield
- Aesthetic



ALSO FOR LARGER PANELS

- Panel width standard up to 1016mm
- Panel width with extension up to 1050mm
- Panel length up to 2080mm



UP TO 40% FASTER INSTALLATION

FlatFix Fusion is a revolutionary and lightweight racking system for solar panels on both large and small surface flat roofs. The system can be mounted in different ways so as to come to the ideal solution. Flatfix Fusion was designed for quick and easy mounting of solar panels on a flat roof, while minimising the number of components needed. The main components are being assembled by means of a simple click system. The mounting of the actual solar panels requires only a single tool.

Thermal action

The various components are connected using fast-click connectors. The connected roof supports ensure the system has room to thermally expand without damaging the roofing material. And that means the base plates of the building space is not transferred to the PV system or vice versa. This prevents damage to the PV system and the roofing material. Plastic for instance is one of the best materials in combination with PVC plasticizer exudation.

Warranty

The patented FlatFix Fusion system is continually tested in a wind tunnel and as per other prevailing norms. FlatFix Fusion is a 100% Dutch product with a unique standard warranty of 20 years.



Quick and easy
Installation



Lightweight



Minimal SKU's

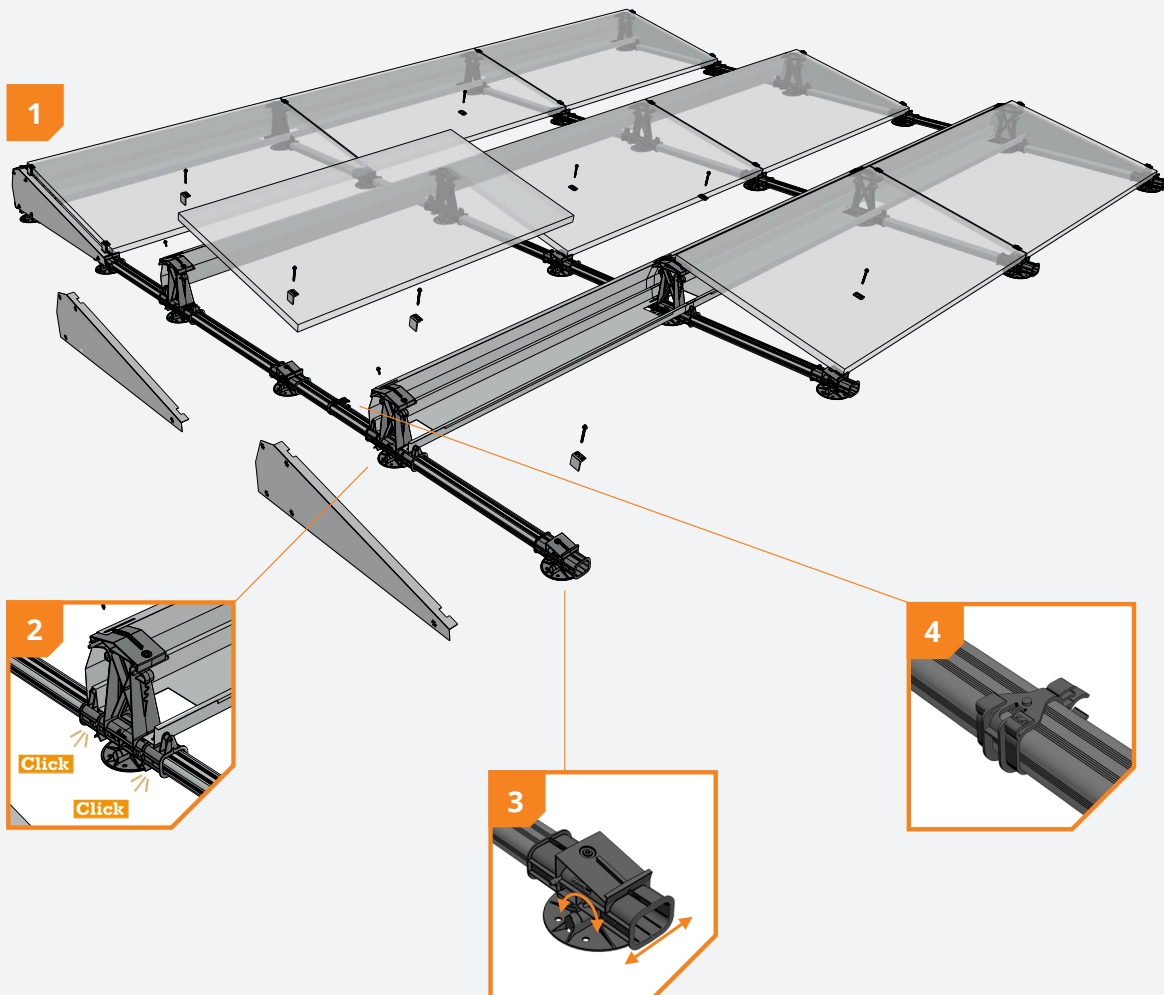
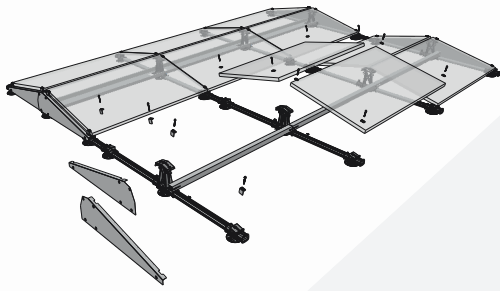


One-tool approach



Standard 20-year
warranty

Dual setup



1 Lightweight system

Due to its connected and closed structure, the system only has to be provided with ballast at a few optimal points.

2 Unique click connector

The revolutionary and unique click connectors make the FlatFix Fusion system a very fast and easy to install mounting system. All further mounting requires only a single tool.

3 Unique thermal decoupling

Using self-adjusting base plates, the FlatFix Fusion system is thermally decoupled. These connected base plates ensure the system has room to thermally expand without damaging the roofing material.

4 Integrated cable management

The cables and plugs of the solar panels can be safely and easily secured to the mounting system. This reduces installation times and increases the quality of the system.

SYSTEM COMPONENTS



FlatFix Fusion Base Plate
1007012



FlatFix Fusion Low Base
1007021
1007021-S (with synchronization)



FlatFix Fusion High Base
1007030
1007030-S (with synchronization)



FlatFix Fusion Cable-clip Optimizer Ready
1007041



FlatFix Fusion Wind Deflector Rear */**
1007201



FlatFix Fusion Wind Deflector, left**
1007204



FlatFix Fusion Wind Deflector, right**
1007205



FlatFix Fusion Ballast Holder*
1007202



FlatFix Fusion Stabilizer*
1007203



FlatFix Fusion Base profile**
210mm 1007121
370mm 1007137
550mm 1007155
750mm 1007175
940mm 1007194

* Also available in 1200, 1500, 1600, 1700, 1900 & 2000

** Also available in black

FASTENERS



Esdec Mounting Screw*
6,5x19mm 1006519
6,5x55mm 1006555
6,5x60mm 1006560
6,5x63mm 1006563
6,5x70mm 1006570
6,5x75mm 1006575
6,5x80mm 1006580
6,5x85mm 1006585



Esdec Screw
6,0x25mm (self tapping) 1003010
6,5x19mm (self drilling) 1003015

* Depending on panel thickness and related terminal clamp

CLAMPS



Universal Module Clamp with synchronization**
1003022



FlatFix End Clamp 31–50mm*/**
10041__

* Depending on panel thickness (in mm)

** Also available in black

ACCESSORIES



FlatFix Fusion Grounding Spring
1007502**



FlatFix Fusion Grounding Clamp (6mm2)
1007505



Esdec Mounting Screw Cap, black*
1006500



TPO mat
1007015



Roof support adapter
1007011



Low base extension
1007021-WP



Earthing bracket
1007503

* Combined with black systems

** Also available ready-assembled, see SYSTEM COMPONENTS

Calculation

Calculation tool available:

- Calculate ballast
- Necessary materials
- Work drawing



Warranty

- Use of premium high-tech materials
- Wind-tunnel tested
- 20-year warranty





QUICK RELIABLE INNOVATIVE

MAKE THE CLICK WITH ESDEC

Esdec has been developing, producing, and supplying professional roof-mounting systems for solar panels since 2004. ClickFit and FlatFix are inspired by all installers who regularly install solar panels. Easy, fast, reliable installation using innovative, high-quality, durable mounting systems: Esdec makes it possible.

Esdec

Londenstraat 16
7418 EE Deventer
The Netherlands

☎ +31 850 702 000
✉ info@esdec.com

30042019

www.esdec.com